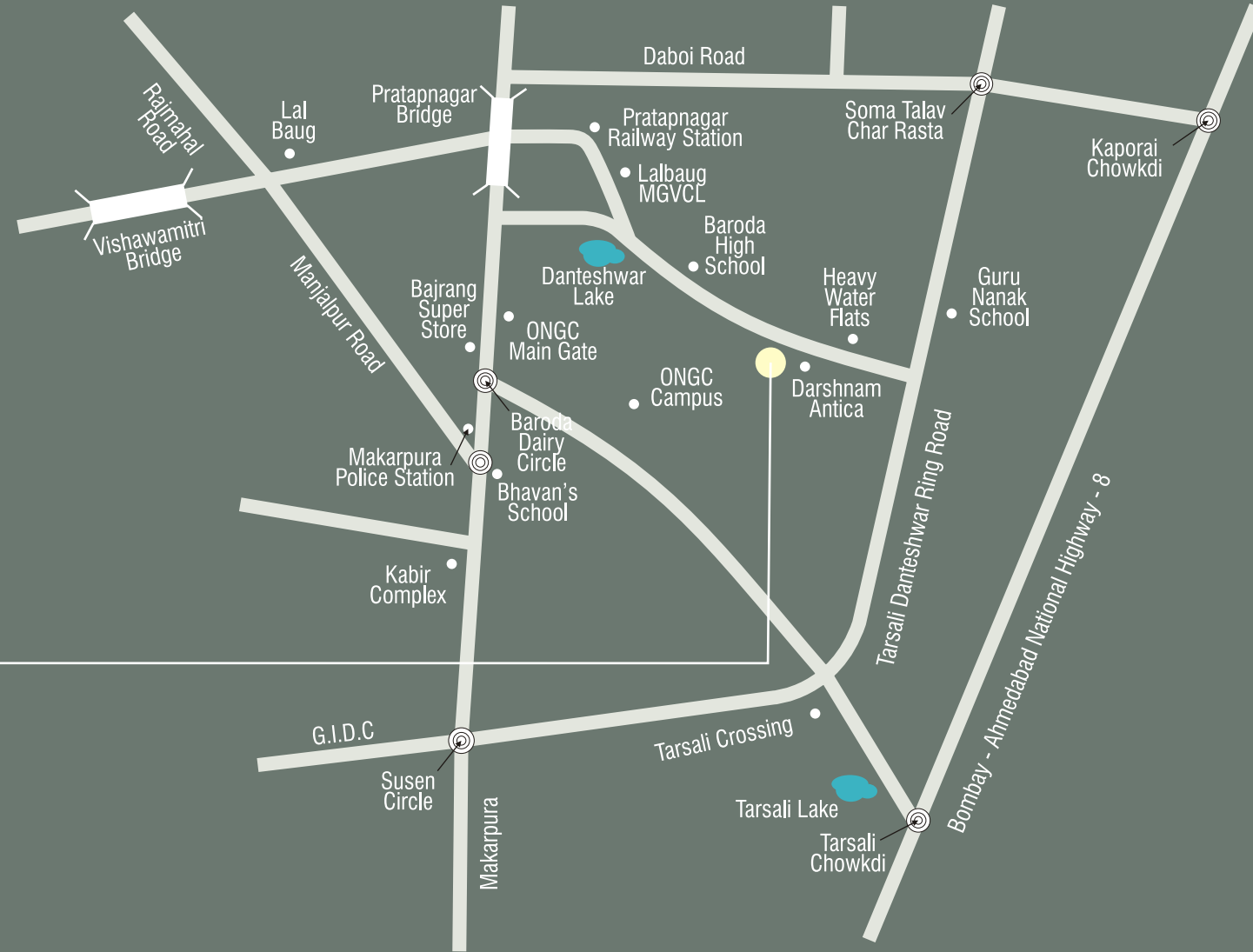


## Keyplan



# ICON green

### Site Office:

**Icon Green,**  
Bh. Anu Co. Op. Society,  
Nr. Darshnam Antica,  
Opp. Heavy Water Colony,  
Danteshwar - Tarsali Ring Road,  
Danteshwar, Vadodara.

### project by



### Enquiry:

+91 98250 10271  
+91 94263 06131  
W.: [www.icongreen.in](http://www.icongreen.in)  
E.: [info@icongreen.in](mailto:info@icongreen.in)

### Architect:

ERA architects  
+91 98251 10729  
+91 9998198160

### Structural:

Zarna Associates  
+91 98250 27338

### Payment modes:

25% Booking - 10% Plinth Level - 10% First slab - 10% Second slab - 10% Third slab - 10% Fourth slab - 10% Masonry work - 10% plaster and flooring - 5% before 30 days of possession.

### TERMS AND CONDITION:

1. documentation charges, electric expense, stamp duty and registration charges to be borne by the buyers. 2. interest @24% per annum shall be applicable on delayed payment. 3. rights reserved by developers to make changes in plans, elevation and specification in consultant with architect will be binding to all. 4. refund in case of cancellation will be made with in 30 days from the date of booking at new client only. administrative expenses of 10% booking amount and amount of extra work. (if any will be deducted from the refund amount). 5. possession with in 30 days after full settlement of all accounts. 6. each member will bear municipal taxes from the date of applicable. 7. for any extra work the cost of work will be borne by the client with advance payment. 8. each member needs to pay maintenance deposits separately. 9. In case of delay in water supply, light connection, drainage work by authority, the developer will not be responsible. 10. service tax and development charges will be applicable.

ANY PLANS, SPECIFICATIONS OR INFORMATION IN THIS BROCHURE CAN NOT FORM PART OF AN OFFER, CONTRACT OR AGREEMENT.

designjunction@9638389117

# ICON green

2BHK & 3BHK Luxury Apartments





*A fresh perspective of life...  
one that's green and serene !*



**ICON**  
green

*Walk into Icon Green  
Walk into a whole new world!*

*A world full of practical luxury, elegant surroundings, spacious living spaces and a life full of comfort for you & your family.*

*Drive past the gates of Icon Green into plush luxury, a multitude of leisure facilities and a great lifestyle !*









The materials, products and finishes at **Icon Green** have been chosen to match the uniqueness & high standards of the project. Technology has been employed to make life as easy and carefree as possible for residents.

## Amenities

- Club house with full facilities for indoor games.
- Aesthetic look with water bodies.
- Well developed landscape garden.
- Decorative entrance gate with security cabin.
- Intercom facility and CCTV cameras for security.
- Provision for internet, tv cable & telephone connection.
- Spacious children play area and senior citizen sitting area.
- Street light on internal road.
- Name plate at parking level.
- RCC trimix road with paver blocks along both sides of road.
- Underground electric cabling for wire free look.
- Standard quality passenger elevator.
- Individual RO system provided in kitchen.
- Water proofing in terrace with china mosaic flooring.
- 24 hours borewell & VMSS connection for water supply.
- Underground and over head tanks with sensors.







## Specification:

**STRUCTURE:** RCC earthquake resistance structure as per structural engineer design.

**FLOORING:** Standard quality vitrified flooring in all rooms.

**WALL FINISH:** Internal smooth plaster with acrylic distemper color and exterior wall with double coat sand face plaster and weather coat paint.

**ELECTRICAL:** Concealed copper ISI wiring and modular switches. (AC, TV, refrigerator, geyser, washing machine points with MCB distribution.)

**DOORS:** Decorative main door with standard fittings and laminated internal flush doors.

**WINDOWS:** Good quality aluminium powder coating section windows with safety grill along with marble frame.

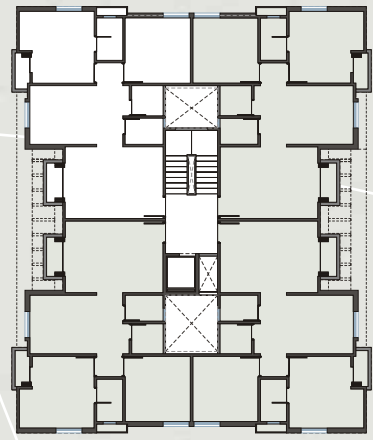
**KITCHEN:** Granite kitchen platform and SS sink & premium branded wall tiles dado upto lintel level.

**BATHROOM:** Designer tiles upto ceiling level with premium CP fittings and sanitary fittings.

**CEILING:** POP ceiling is to be provided in drawing room with electric points.







2bhk flats  
TOWER A | B | C | D | E | F | G



3bhk flats  
TOWER A1

